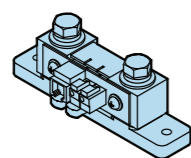
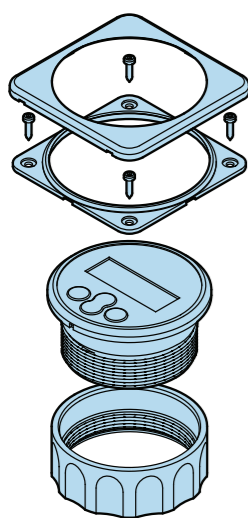


Battery monitor

BMV-700 & BMV-702

quick installation sheet

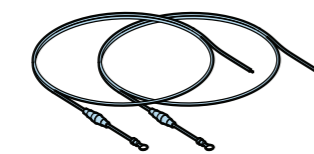
Included



Shunt



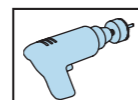
UTP cable



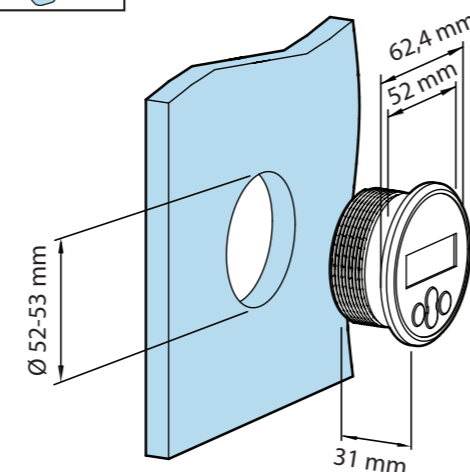
Pos. supply cable (x2)

Battery monitor

1

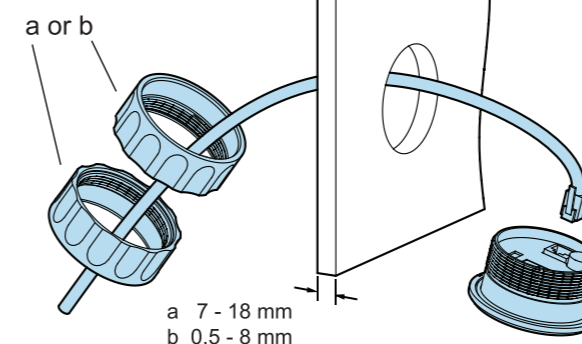


Method A

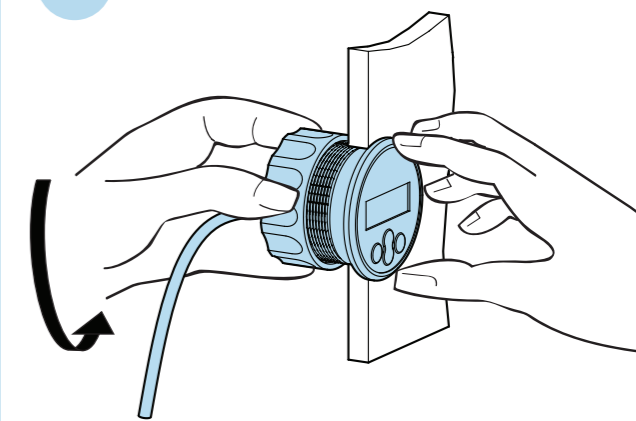


Method B

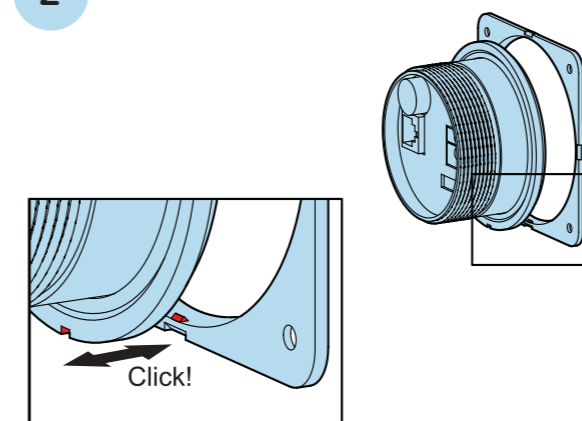
2



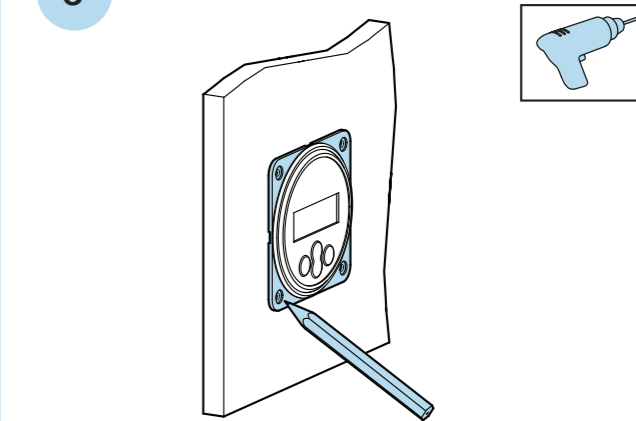
3



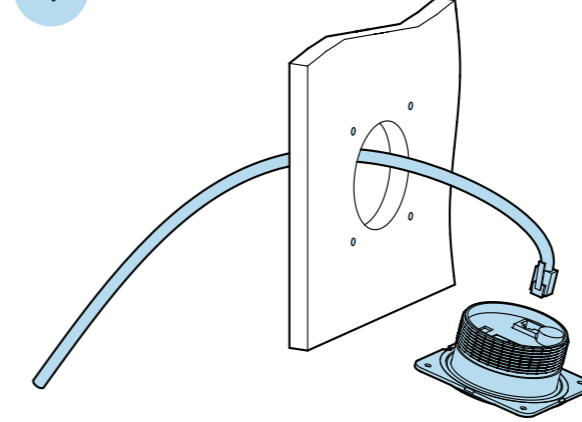
2



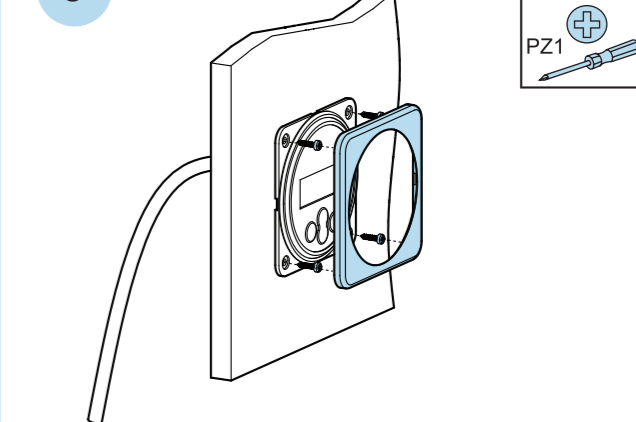
3



4



5



FIRST TIMERS



In case of Li-Ion batteries, several settings may have to be changed after the setup wizard is completed. Please refer the manual.

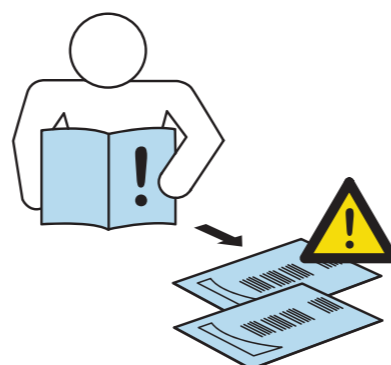
The BMV will automatically adjust itself to the **nominal voltage** of **commonly** used battery systems. Please refer the manual.

WARNING



Please read this guide carefully to avoid wrong connections that cause battery monitor malfunction and/or fire hazards.

Disconnect the negative pole of the battery before installation.



Wiring diagrams



Connect the negative pole of the battery last!

BMW-700

BMW-702 configured for *STARTER*-battery monitoring.

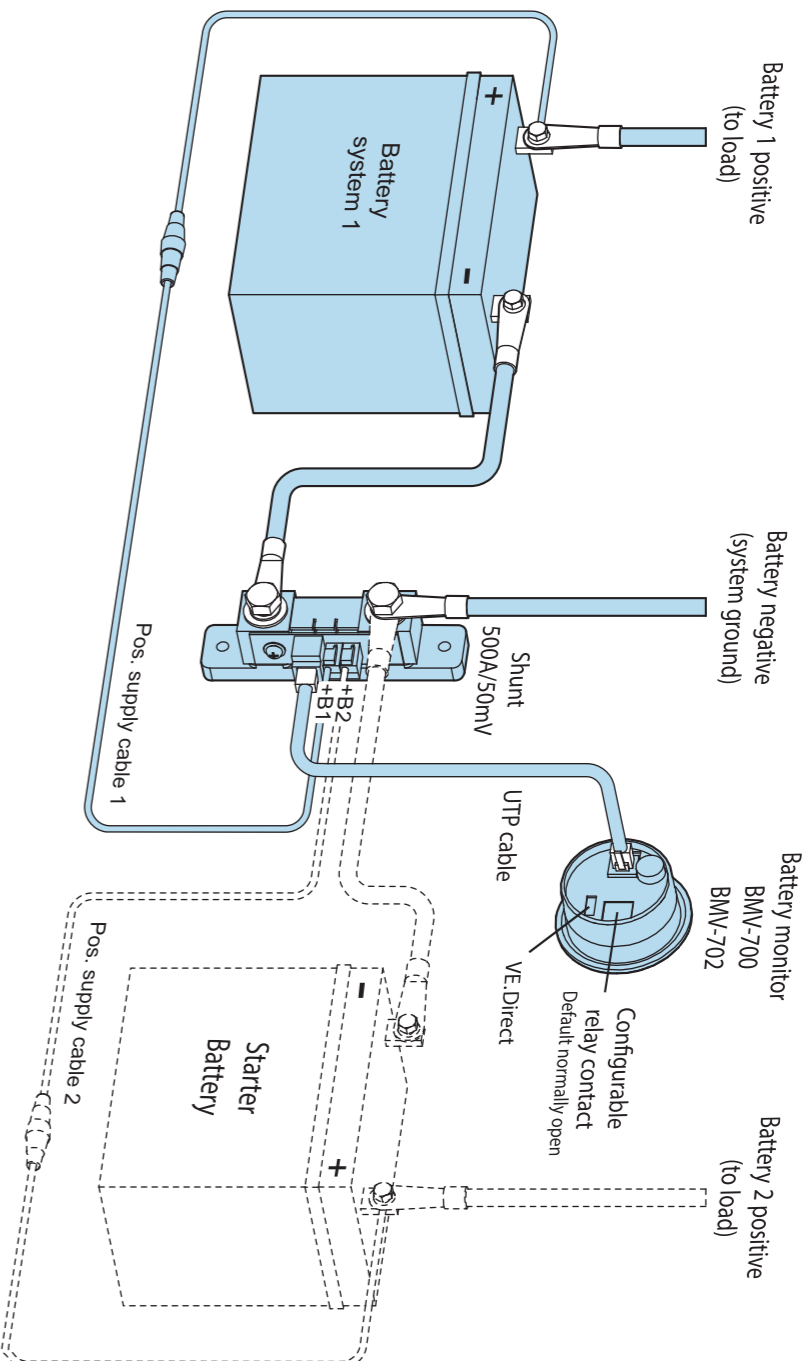


Fig. 1

BMW-702 configured for *MID-POINT* voltage monitoring

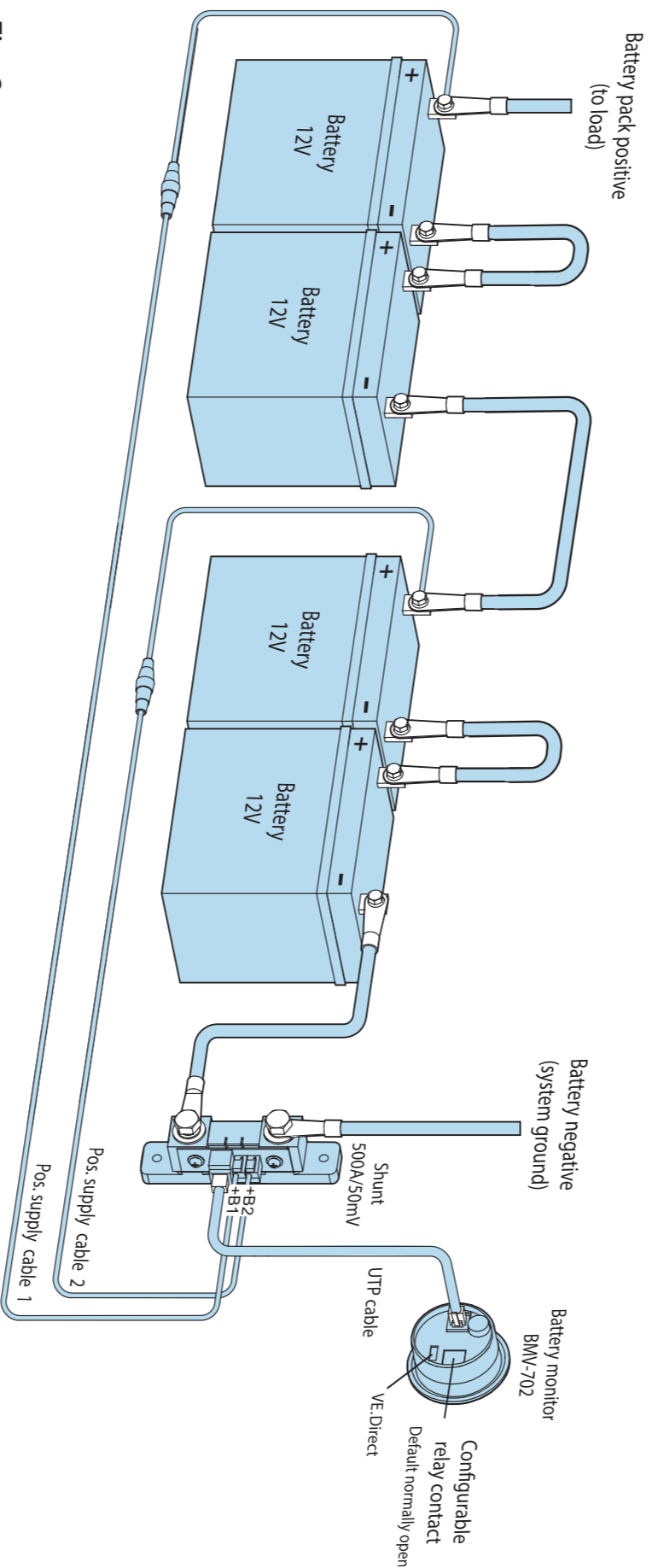


Fig. 2

BMW-702 configured for battery *TEMPERATURE* monitoring

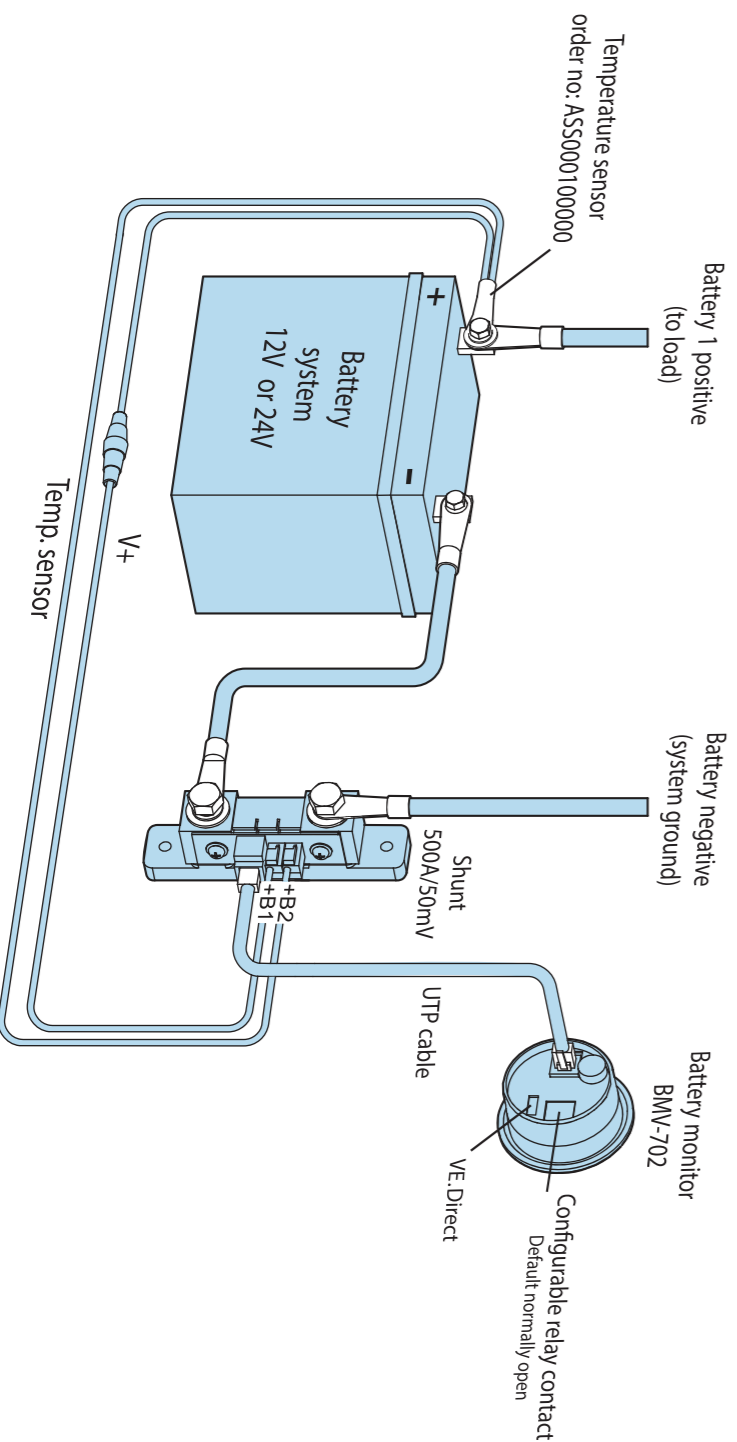


Fig. 3



Connect the negative pole of the battery last!

quick installation sheet