



ULTRA-LIGHTWEIGHT



FLEXIBILITY



EASILY MOUNTED  
WITH A NUMBER OF  
ASSEMBLY OPTIONS



EXTREME WEATHER  
CONDITIONS



SPECIAL CUSTOMIZED  
SOLUTIONS



HIGHER ENERGY  
YIELD



#### THERMAL CHARACTERISTICS

Operating temperature range	-40°C to +85°C
Temperature coefficient P <sub>mpp</sub>	-0.393 % / °C
Temperature coefficient V <sub>oc</sub>	-0.310 % / °C
Temperature coefficient I <sub>sc</sub>	+0.051 % / °C

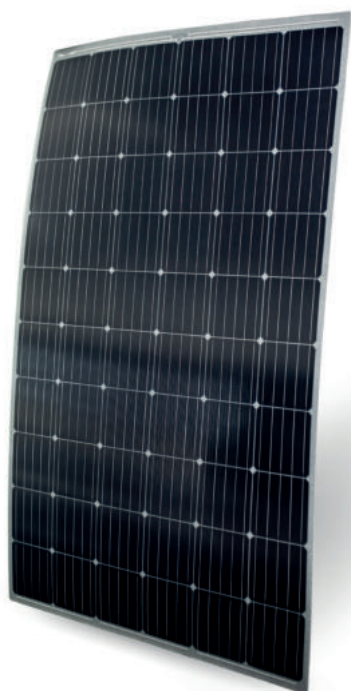
#### TECHNICAL DATA

Solar cells	5BB monocrystalline solar cells
Maximum system voltage	1000 V
Maximum reverse current	20 A
I <sub>sc</sub>	9.043 A
I <sub>mp</sub>	8.6 A
Weight	from 2.5 kg/m <sup>2</sup> (typically 3.3 kg/m <sup>2</sup> )
Front sheet	Soil-resistant ETFE-Film
Encapsulation	Patented fiberglass-reinforced plastic
Back sheet	High-resistance PET
Junction box	TÜV-certified (IP67/68) with bypass-diodes
Cables	2 x 4 mm <sup>2</sup>
Connector	PV4-S

# THE UNIVERSAL MODULE

AVAILABLE STANDARD SIZES

Please contact us for any other size or format.



Module length	2024 mm FJB* or 1975 mm**	8.04 Voc 6.40 Vmp	16.08 Voc 13.38 Vmp	24.11 Voc 19.77 Vmp	32.15 Voc 26.17 Vmp	40.19 Voc 32.56 Vmp	47.73 Voc 40.58 Vmp
	1868 mm FJB* or 1819 mm**	7.37 Voc 5.82 Vmp	14.74 Voc 12.21 Vmp	22.10 Voc 18.03 Vmp	29.47 Voc 24.42 Vmp	36.84 Voc 30.24 Vmp	44.21 Voc 36.05 Vmp
	1706 mm FJB* or 1657 mm**	6.70 Voc 5.24 Vmp	13.40 Voc 11.05 Vmp	20.10 Voc 16.28 Vmp	26.79 Voc 22.10 Vmp	33.49 Voc 27.33 Vmp	40.19 Voc 32.56 Vmp
	1549 mm FJB* or 1500 mm**	6.03 Voc 4.66 Vmp	12.06 Voc 9.89 Vmp	18.09 Voc 14.54 Vmp	24.11 Voc 19.77 Vmp	30.14 Voc 24.42 Vmp	36.17 Voc 29.07 Vmp
	1389 mm FJB* or 1340 mm**	5.36 Voc 4.07 Vmp	10.72 Voc 8.73 Vmp	16.08 Voc 12.80 Vmp	21.43 Voc 17.45 Vmp	26.79 Voc 21.52 Vmp	32.15 Voc 26.17 Vmp
	1230 mm FJB* or 1181 mm**	4.69 Voc 3.49 Vmp	9.38 Voc 7.56 Vmp	14.07 Voc 11.63 Vmp	18.76 Voc 15.12 Vmp	23.44 Voc 19.19 Vmp	28.13 Voc 23.26 Vmp
	1070 mm FJB* or 1021 mm**	4.02 Voc 2.91 Vmp	8.04 Voc 6.40 Vmp	12.06 Voc 9.89 Vmp	16.08 Voc 13.38 Vmp	20.10 Voc 16.28 Vmp	24.11 Voc 19.77 Vmp
		204 mm	354 mm	523 mm	673 mm	842 mm	991 mm
		Module width					

\*Dimensions front junction box (length) \*\* Dimensions rear junction box (length)

## APPLICATIONS

Building-integrated and building-applied PV (rooftop, facade), special applications

## POWER RANGE 25-340 WP

Tolerances\*  
 $\geq 250$  Wp: -0/+10 W  
 $< 250$  Wp: -5/+5 W  
 Isc: +/- 10%  
 Voc: +/- 10%

\* all electrical data at STC  
 (1.000 W/m<sup>2</sup>, 25 +/- 2 °C,  
 AM 1.5 according to IEC 60904-3)

## HIGH RELIABILITY

IEC 61730 | IEC 61215  
 IEC 62804-1 Potential-induced degradation  
 IEC 61701 Salt mist corrosion  
 IEC 62716 Ammonia corrosion  
 EN 13501-5 B<sub>ROOF</sub> (t1) "Flying sparks test"

## WARRANTY

10-year product warranty  
 40-year linear performance warranty for building-integrated and building-applied installations

## SCIENTIFIC PARTNERS AND ASSOCIATIONS



Ferdinand Graf von Zeppelin-Straße 18, 2700 Wiener Neustadt, Austria

Phone / +43 2622 35035 0 E-Mail / office@das-energy.com Web / www.das-energy.com

